

### Finishes

Finishes add beauty as well as durability to finish hardware. For that reason Stanley Security Solutions (Stanley) offers a variety of finishes to suit the most popular tastes and the most grueling environments. When choosing finishes keep the following factors in mind:

- Interior elements such as cleaners, chlorine, or solvents
- Exterior elements such as direct sunlight, salt spray, or rain
- Frequency of use
- Harshness of use
- Aesthetic needs

- Mortise
- Exit Device



605 ■ ●



606 ■ ●



611 ■



612 ■ ●



613 ■ ●



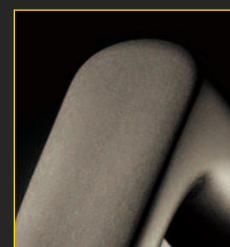
625 ■ ●



626 ■ ●



630 ■



690 ■



626AM ■

BHMA	Fed. Spec.	Description
605	US3	Bright Brass, Clear Coated
606	US4	Satin Brass, Clear Coated
611	US9	Bright Bronze, Clear Coated
612	US10	Satin Bronze, Clear Coated
613	US10B	Oxidized Satin Bronze, Oil Rubbed
618	US14	Polished Nickel Plated
619	US15	Satin Nickel Plated
622	US19	Flat Black
625	US26	Bright Chromium Plated
626	US26D	Satin Chromium Plated
627	US27	Satin Aluminum, Clear Coated
628	US28	Satin Aluminum, Clear Anodized
629	US32	Bright Stainless Steel
630	US32D	Satin Stainless Steel
690	US20	Dark Bronze, Powder Coated
626AM	–	Satin Chromium Plated with UltraShield™ antimicrobial coating
630AM	–	Satin Stainless Steel with UltraShield™ antimicrobial coating



630AM ■ ●